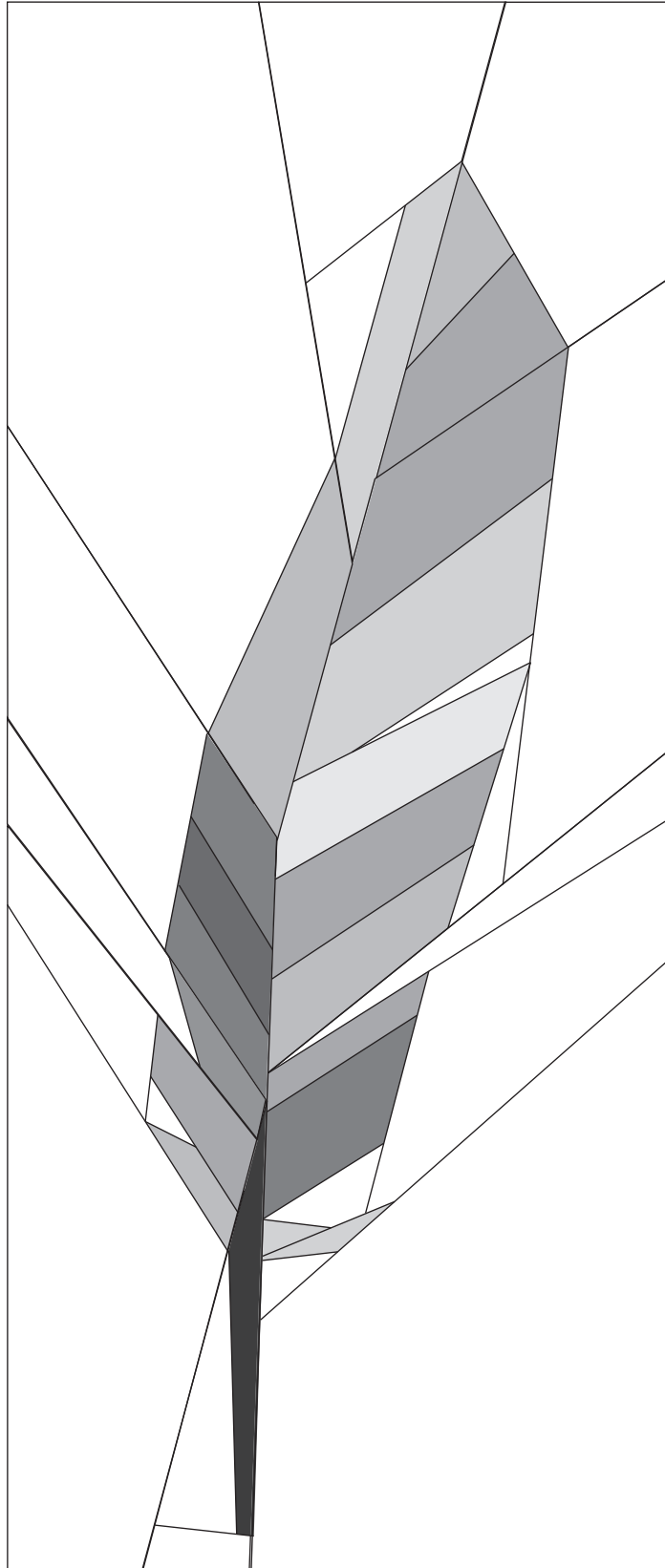


# Contour Feather

Designed by Anne Sullivan @ Play Crafts



## Assembly:

Creates a 12" tall x ~4.75" finished feather block.

Sew sections **A + B + C** together.

Sew sections **D + E** together.

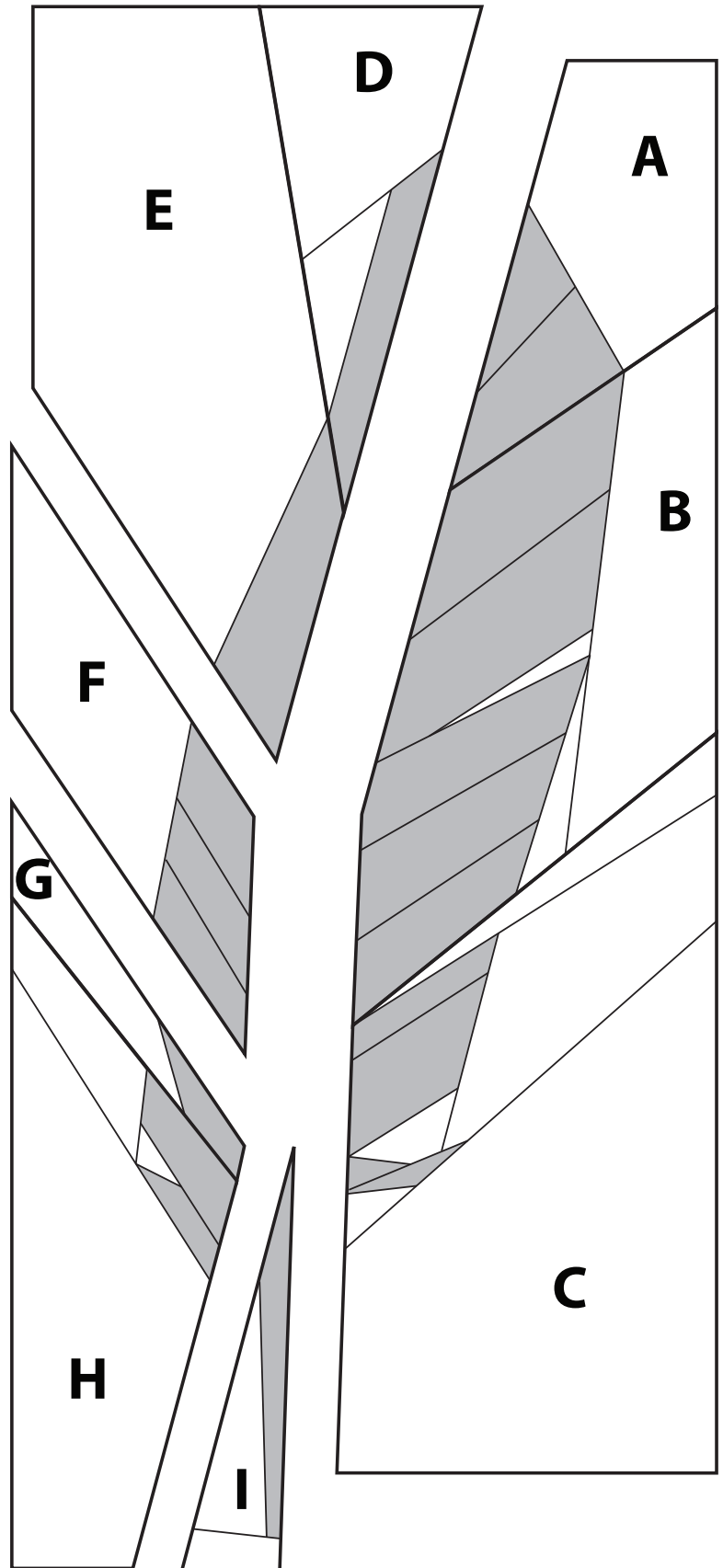
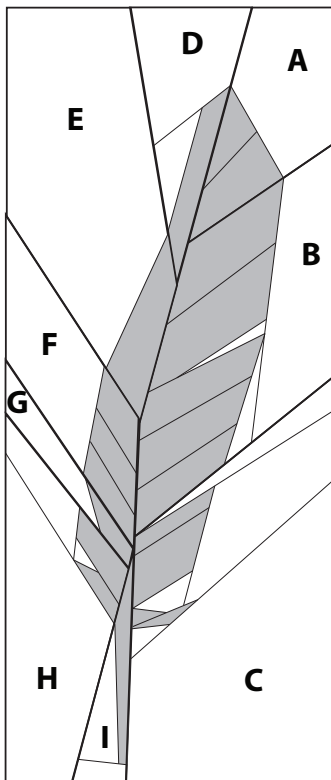
Sew sections **G + H** together.

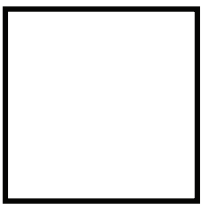
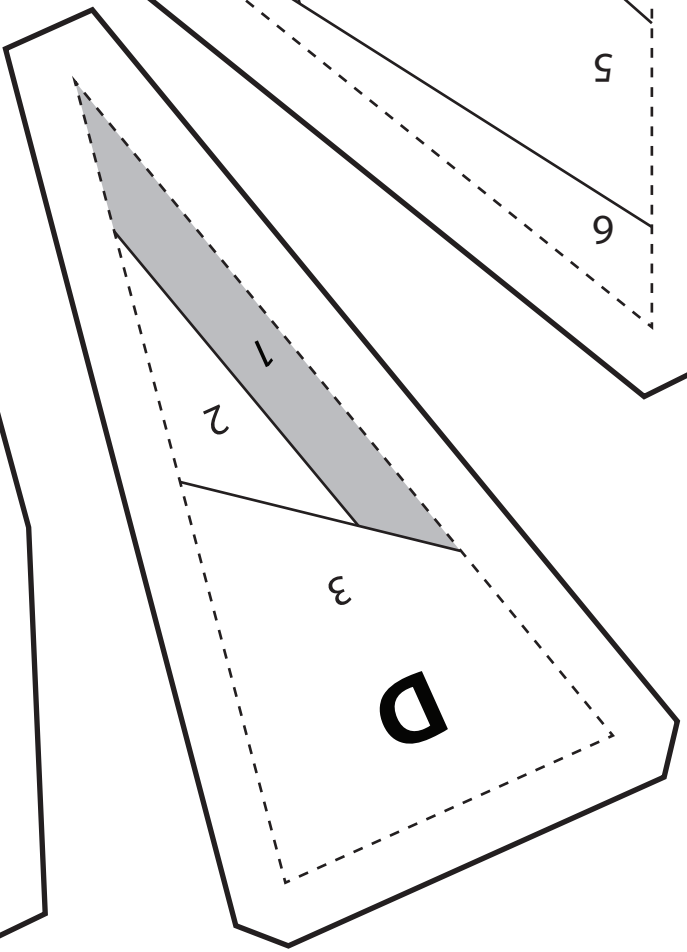
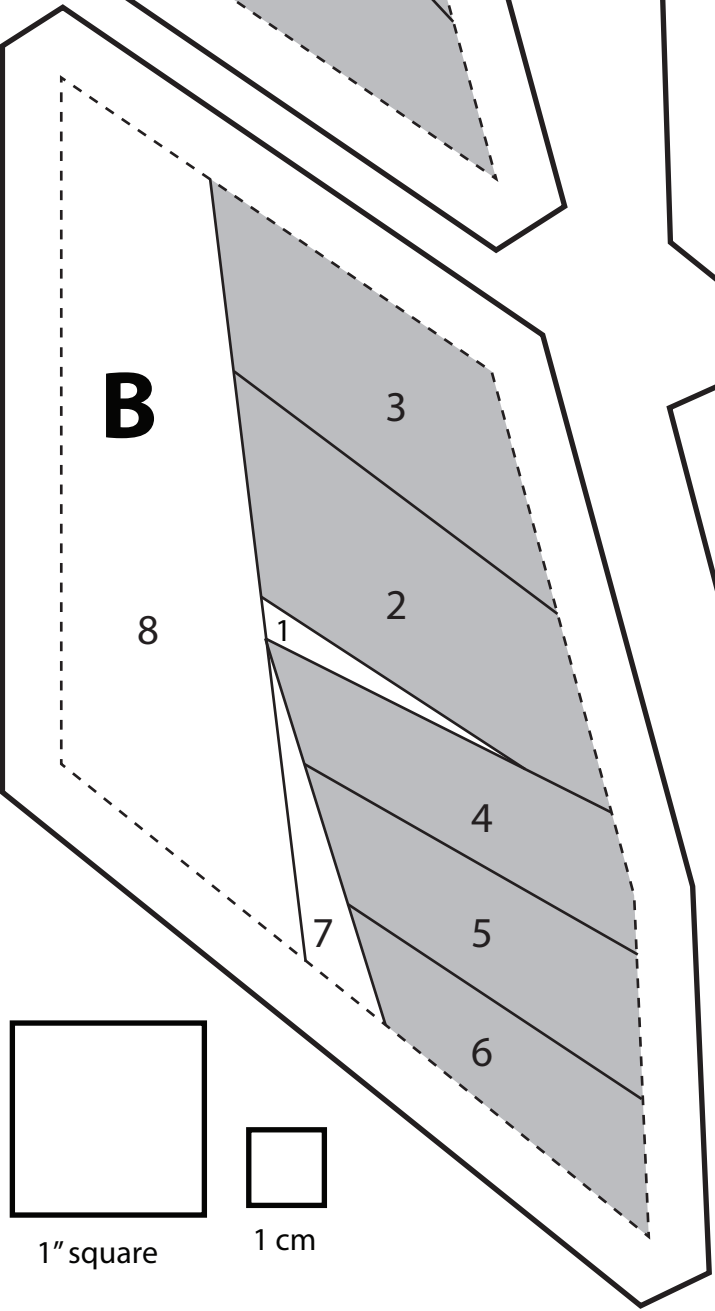
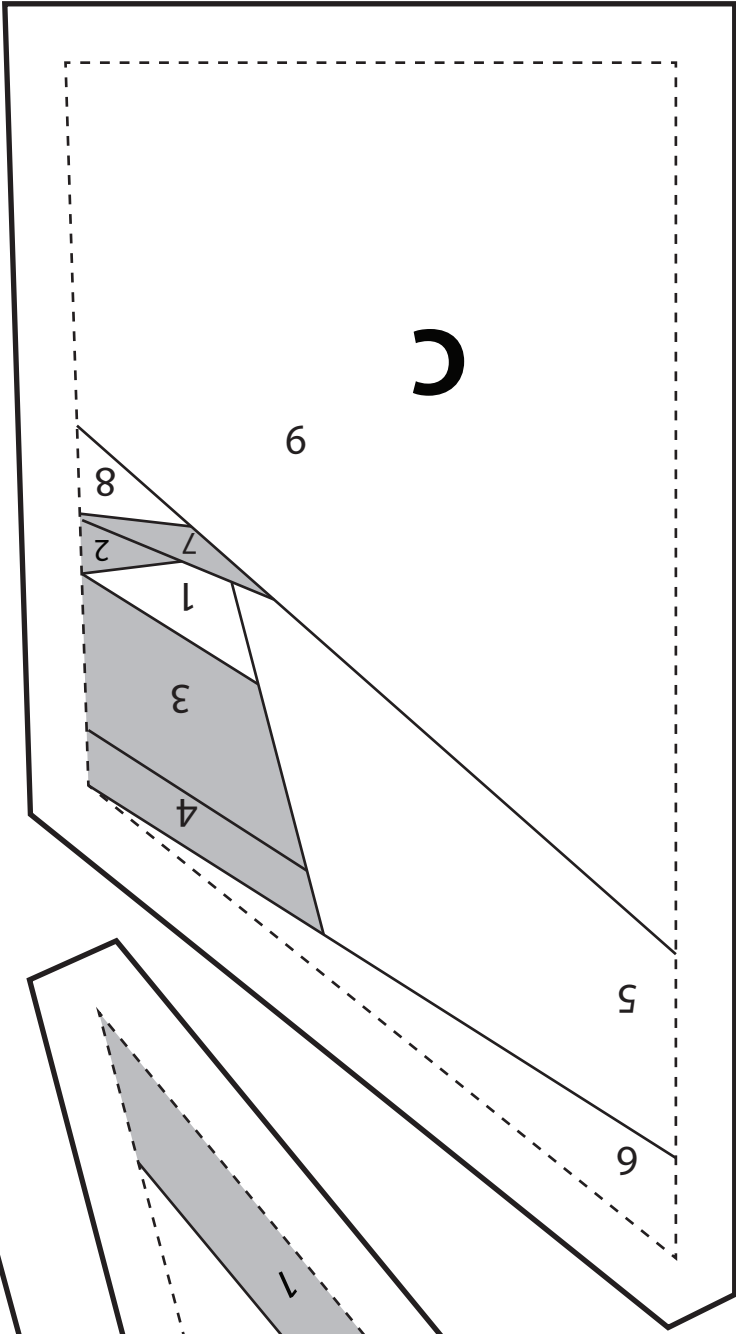
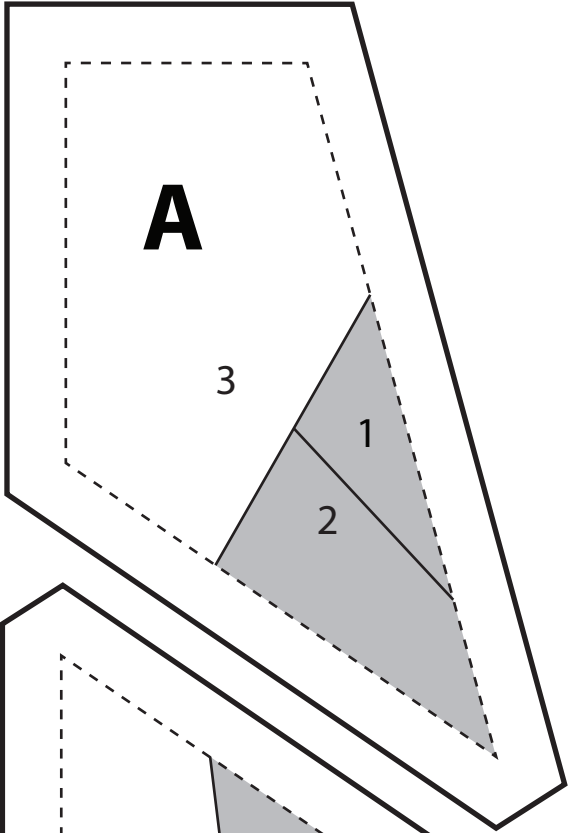
Sew sections **DE + F** together.

Sew sections **GH + I** together.

Sew sections **DEF + GHI** together.

Sew sections **ABC + DEFGHI** together using a Y-seam.

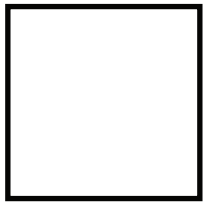
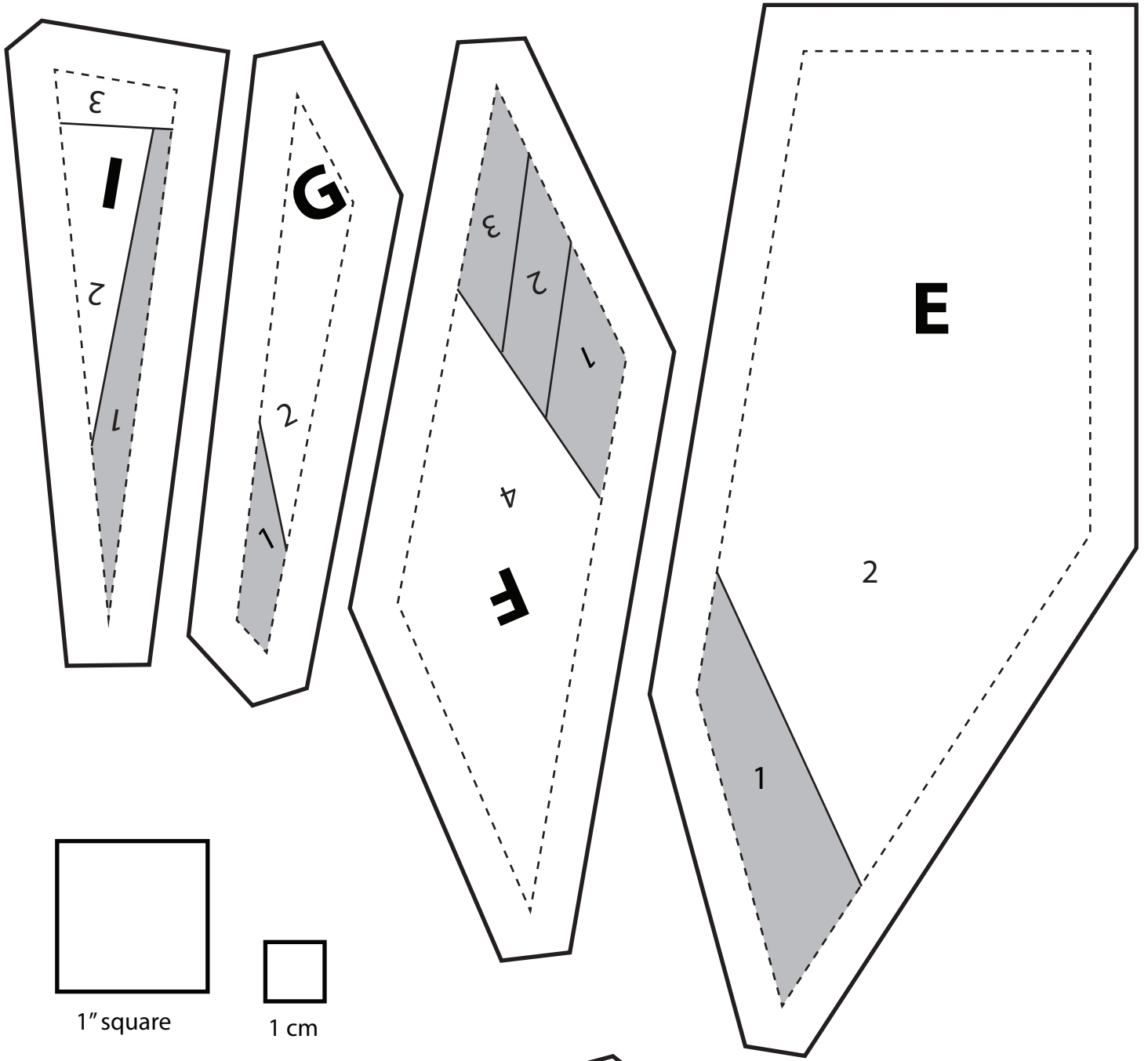




1" square



1 cm



1" square



1 cm

